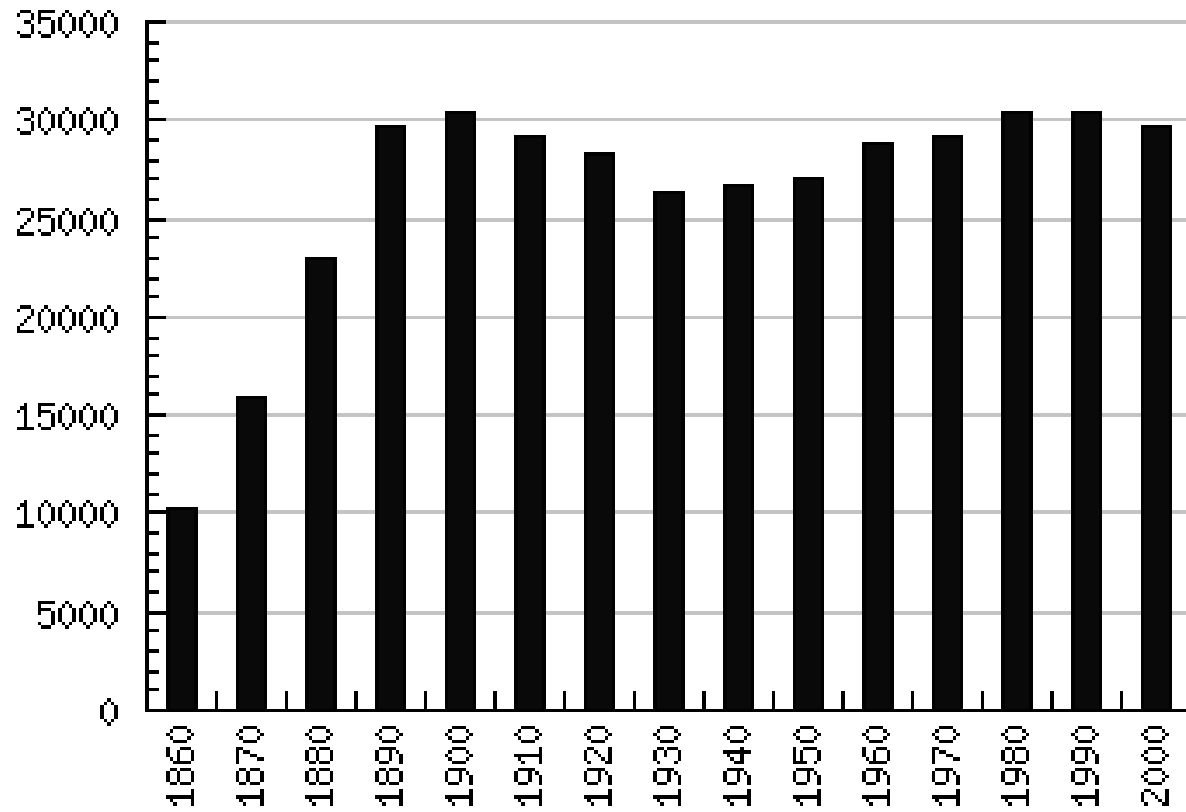


Economic Shifts, Trends, and Impacts in Van Wert County

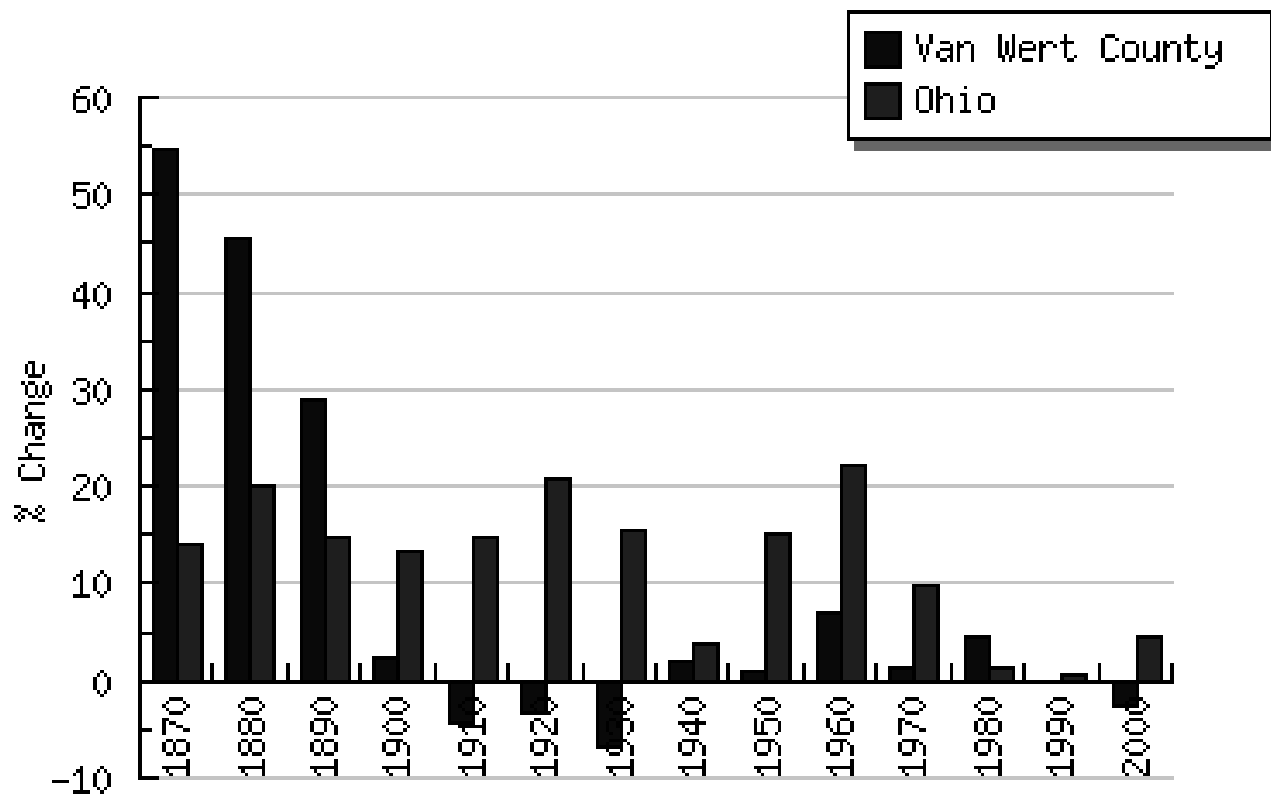
Dave Kraybill, Professor
Dept. of AED Economics
Ohio State University



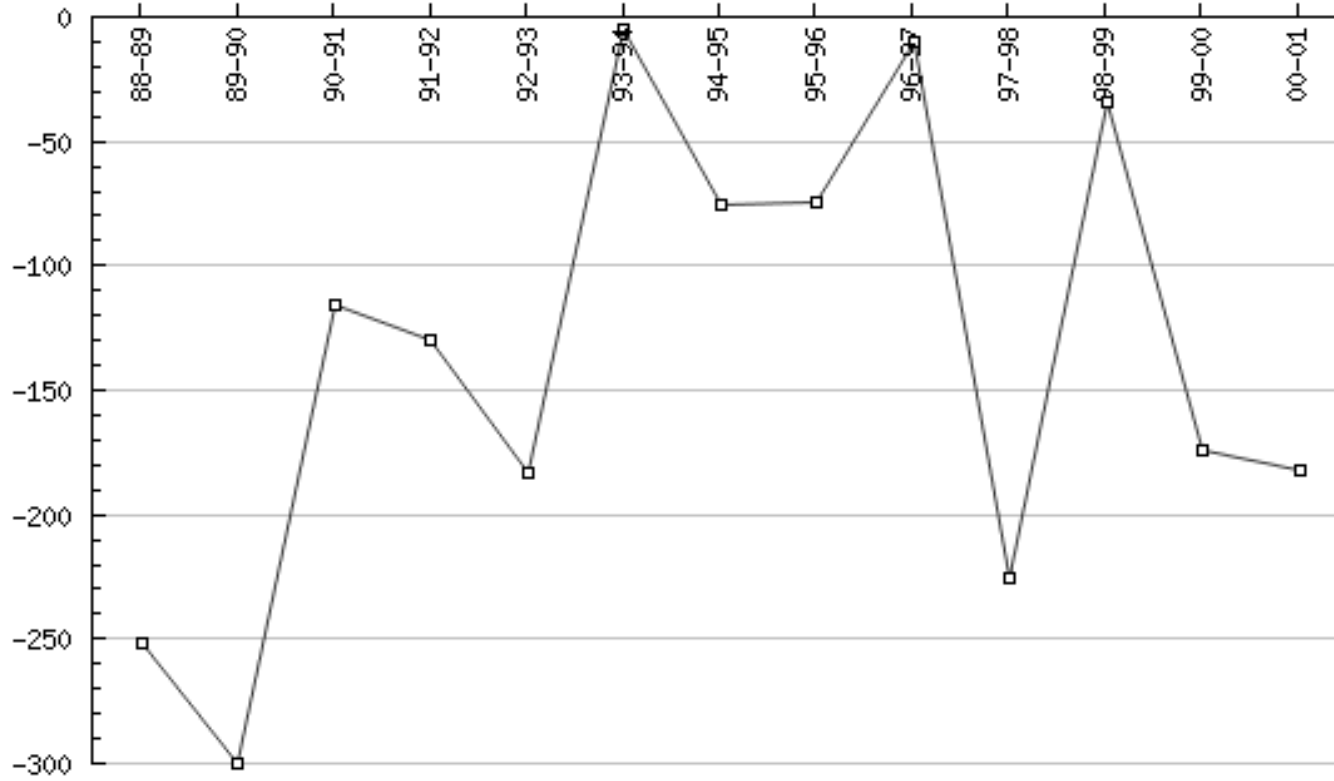
Population Over Time



Percent Change in Population Over Time

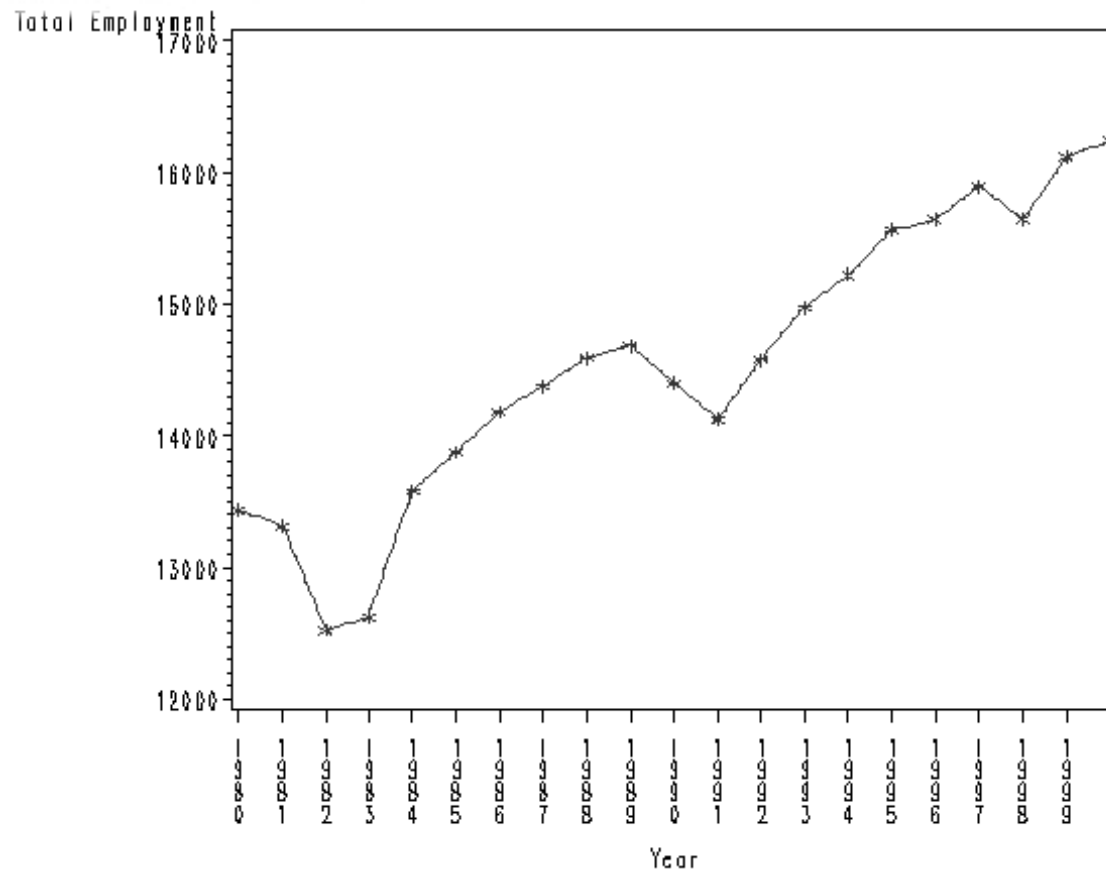


Net Migration Flow

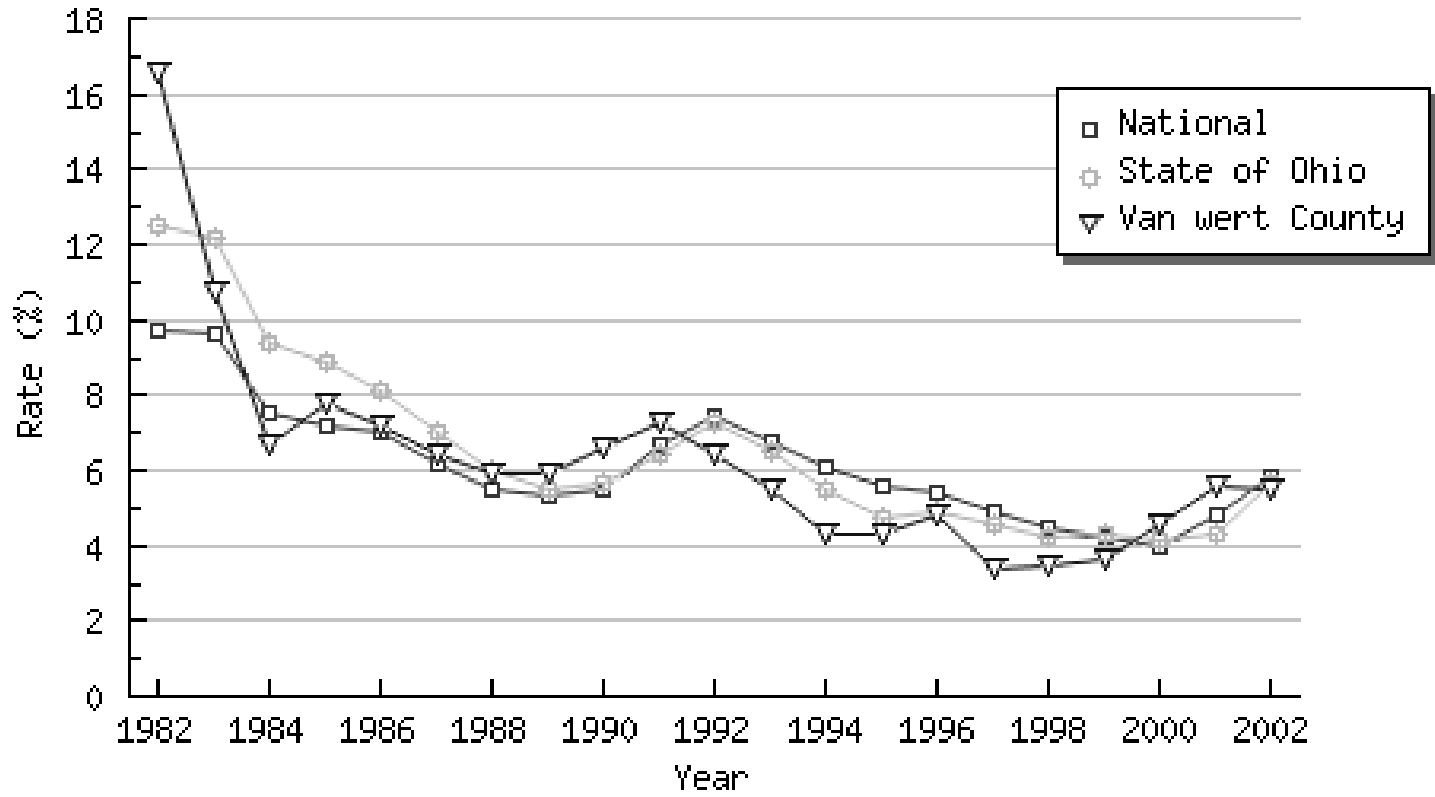


Total Employment

1980-2000, Van Wert County

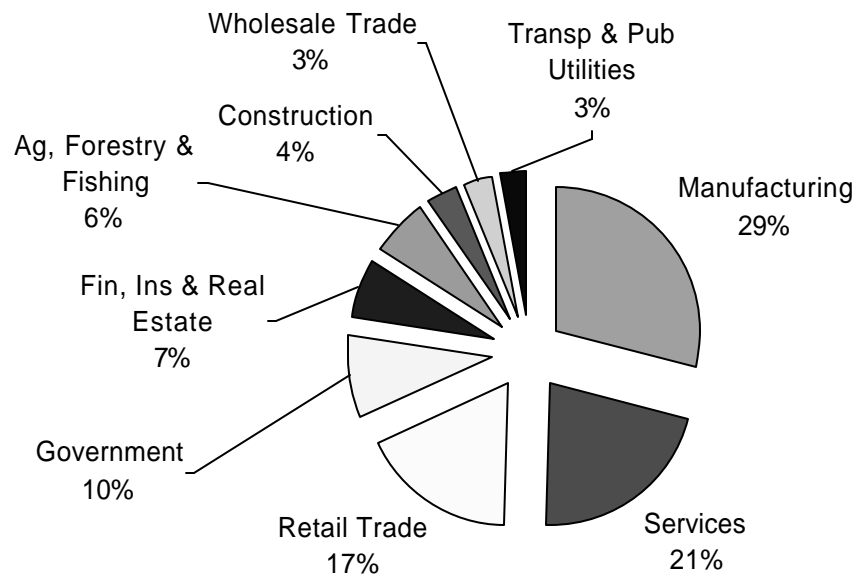


Unemployment



Sectoral Employment Shares

2000, Van Wert County



Employment Change

1990-2000, Van Wert County



Industry Classification	Employment 1990	Employment 2000	Employment Change 1990-2000	Percent Growth 1990-2000
Manufacturing	4,402	4,745	343	7.8
Services	2,745	3,469	724	26.4
Retail Trade	2,198	2,823	625	28.4
Government	1,438	1,556	118	8.2
Fin, Ins & Real Estate	847	1,084	237	28
Ag, Forestry & Fishing	1,250	988	-262	-21
Construction	651	595	-56	-8.6
Wholesale Trade	538	545	7	1.3
Transp & Pub Utilities	300	431	131	43.7
Mining	24	.	.	.
	14,393	16,236	1,867	13.0

Employment Multipliers

Van Wert County

Sector	Multiplier
Manufacturing	2.7
Construction	2.1
Finance, insurance, real estate	2.0
Transportation, communications, and public utilities	1.9
Agriculture	1.7
Services	1.4
Government	1.4
Wholesale and retail trade	1.3

A multiplier of 2.7 in manufacturing means that creation of one new job in manufacturing creates an additional 1.7 jobs in the county..

Total Regional Jobs Created by 100 New Manufacturing Jobs

Van Wert County

	Jobs	Labor Income
Agriculture	8	\$92,556
Mining	0	\$15,444
Construction	2	\$73,603
Manufacturing	135	\$5,604,843
TCPU	6	\$214,435
Trade	51	\$894,243
FIRE	9	\$340,829
Services	51	\$1,063,054
Government	5	\$178,835
Other	<u>1</u>	<u>\$8,564</u>
TOTAL	270	\$8,486,405

Total Regional Jobs Created by 100 New Finance, Ins, & Real Estate Jobs Van Wert County

	Jobs	Labor Income
Agriculture	2	\$27,246
Mining	0	\$1,303
Construction	4	\$142,338
Manufacturing	7	\$304,395
TCPU	3	\$109,269
Trade	20	\$347,322
FIRE	118	\$4,382,024
Services	41	\$862,047
Government	5	\$179,783
Other	<u>0</u>	<u>\$4,055</u>
TOTAL	202	\$6,359,783

Total Regional Jobs Created by 100 New Transp, Comm, & Pub Utility Jobs Van Wert County

	Jobs	Labor Income
Agriculture	1	\$11,697
Mining	0	\$10,735
Construction	3	\$98,510
Manufacturing	10	\$413,459
TCPU	108	\$3,590,897
Trade	21	\$360,409
FIRE	6	\$224,208
Services	36	\$758,782
Government	4	\$139,114
Other	<u>1</u>	<u>\$8,632</u>
TOTAL	190	\$5,616,442

Total Regional Jobs Created by 100 New Service Jobs

Van Wert County

	Jobs	Labor Income
Agriculture	1	\$5,960
Mining	0	\$676
Construction	1	\$18,054
Manufacturing	4	\$174,618
TCPU	1	\$45,997
Trade	10	\$176,028
FIRE	3	\$127,240
Services	119	\$2,499,849
Government	2	\$60,666
Other	<u>0</u>	<u>\$1,800</u>
TOTAL	141	\$3,110,889

Shift-Share Analysis

- Purpose -- to understand the sources of employment change in the region
- Sources of change
 - National aggregate growth
 - National industry growth
 - Competitive share
 - Indicates competitive advantage or disadvantage of the region compared to rest of U.S.

Analysis of Employment

1990-2000, Van Wert County

Industry Classification	National Growth (%)	Industrial Mix (%)	Competitive Share (%)	Actual Growth (%)
Manufacturing	20.1	-23.1	10.8	7.8
Retail Trade	20.1	-0.8	9.1	28.4
Transp & Pub Utilities	20.1	5.5	18.1	43.7
Fin, Ins & Real Estate	20.1	5.9	2	28
Government	20.1	-12.8	0.9	8.2
Wholesale Trade	20.1	-7.1	-11.7	1.3
Construction	20.1	12.2	-40.9	-8.6
Services	20.1	17.5	-11.3	26.4
Ag, Forestry & Fishing	20.1	-5.7	-35.4	-21.0